



# LGRED° Systems

## Superior year-round heating and cooling

---

**LG Air Conditioning Technologies**

---



# Stay comfortable all year long with industry-leading LGRED° heat technology.

## WHAT IS LGRED° HEAT TECHNOLOGY?

Products featuring LGRED° heat (Reliable to Extreme Degrees) boast superior performance under challenging conditions. Be toasty warm even in the coldest winter months, when traditional units are unable to keep up with demand. Expect 100% heating capacity down to 5° F and continuous heating operation, even when it's -13° F outside.

**LGRED°**  
Powerful Heat Technology  
RELIABLE TO EXTREME DEGREES

## WHAT ARE ADVANTAGES OF LG SYSTEMS WITH LGRED° HEAT?

LG Systems with LGRED° offer all of the traditional benefits of LG duct-free and inverter technology while delivering industry-leading heating performance.

### Room-by-room Control

With a controller for each indoor unit, LG systems offer precise temperature settings in each zone (room) while maximizing energy savings by heating or cooling only the zones in use.

### Flexibility

Available in a full range of capacities and indoor unit styles, including several types of ducted units and the award-winning LG Art Cool™ Gallery.

### Energy Efficient

LG systems with LGRED° are ENERGY STAR® certified\*. LG's inverter technology intelligently senses the air conditioning demand and proportionally ramps the inverter compressor up or down, unlike traditional systems that have limited ability to calculate proportional energy use relative to the demand.

### Quiet

LG indoor units are among the quietest in the industry, operating at decibel levels similar to the sound of rustling leaves.

### All-season Use

All LG systems with LGRED° are heat pumps, meaning they have both cooling and heating capabilities.

### Wi-Fi Compatible

All LGRED° systems are Wi-Fi compatible giving homeowners the freedom to control their system from anywhere using the LG ThinQ® app and can be voice-controlled through Amazon Alexa, and Google Home™.



ENERGY EFFICIENT



**LG ThinQ®**



works with the  
**Google Assistant**

\*All LG Single Zone LGRED° systems and many Multi-Zone LGRED° combinations are ENERGY STAR® certified. Refer to pages 48-49 of LG's Residential and Light Commercial catalog for a list of ENERGY STAR® certified systems.

Google Home™ is a trademark of Google LLC. Amazon Alexa, and all related marks are trademarks of Amazon.com, Inc. or its affiliates.

# Powerful Heating Performance from LG

Year-round climate control in one heat pump:  
One system for comfort, one system to maintain,  
and one system to operate.

[lgcomfortzone.com](http://lgcomfortzone.com)



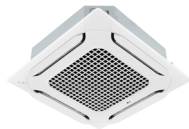
## SYSTEMS WITH LGRED® HEAT TECHNOLOGY

### SINGLE ZONE SOLUTIONS

LG Single Zone solutions combine outstanding heating and cooling performance with styling that works in any home design.



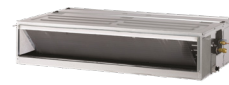
Art Cool™ Premier



Ceiling Cassette



Low Static



High Static



Vertical AHU

### MULTI-ZONE SOLUTIONS



**Multi F with LGRED®** systems use a single inverter-driven outdoor unit to efficiently provide heating and cooling to as many as four rooms. **Capacity Range: 18,000 to 30,000 Btu/h**  
**Rated Heating Capacity: 22,000 to 28,600 Btu/h**



**Multi F MAX with LGRED®** provides powerful and personalized performance for larger-scale heating and cooling needs or a whole home, up to six rooms. **Capacity Range: 36,000 to 48,000 Btu/h**

*Indoor Units for use with Multi F and Multi F MAX outdoor units:*

#### Wall Mounted



ArtCool Gallery



High Efficiency

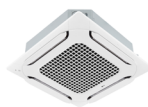


Art Cool Mirror



Low Wall Console

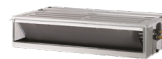
#### Ceiling Mounted and Ducted



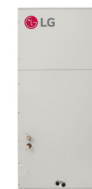
Ceiling Cassette



Low Static



High Static



Vertical AHU

## BRINGING YOU SAVINGS FROM DAY ONE, LGRED° PRODUCTS ARE THE PERFECT SINGLE ROOM OR WHOLE-HOME SOLUTION.

### Installation

- Just a three-inch hole is needed to connect the outdoor unit and indoor air handler, so installation is simpler than many other heating and cooling options.
- With no costly ductwork, LGRED° systems can be installed where conventional ducted systems can't, ideal for older homes, additions or problem rooms.
- Have ducts already? No problem! LG also has a several ducted styles of indoor units to choose from in a full range of capacities.



### Rebates

- Homeowners may even qualify for federal, local, and utility rebates which can substantially offset the cost of installation. Check [rebates.lghvac.com](http://rebates.lghvac.com) to see all applicable rebates and incentives!

### SEER: Your Guide to Cool Savings

An acronym for Seasonal Energy Efficiency Ratio, SEER is the industry-wide rating for energy consumption. The higher the number, the more efficiently a product will produce cool air, while conserving our natural resources. Your contractor will be happy to explain SEER numbers in greater detail, and help determine which LG comfort system is right for you.

### HSPF: For Cost-Saving Coziness

Heating Seasonal Performance Factor, or HSPF, represents total heating output relative to electricity used. Like SEER, the higher the HSPF rating, the more efficiently a product will warm air. In climates where heating is necessary in winter months as well as cooling in the summer, ask your contractor to suggest the ideal LG comfort system.



ENERGY STAR® is a joint program of the U.S. Environmental Protection Agency (EPA) and the U.S. Department of Energy (DOE) created to promote energy-efficient products and practices. The ENERGY STAR® logo helps homeowners identify which products meet energy efficiency performance levels set by U.S. EPA and U.S. DOE.



**LG Electronics USA, Inc.**  
Air Conditioning Technologies  
4300 North Point Parkway, Alpharetta, GA 30022

